

# Sierra Avalanche Center

## *2018 Annual Report*



The Sierra Avalanche Center (SAC) continues to function as a partnership between the Tahoe National Forest and a volunteer Board of Directors with 501(c)(3) not-for-profit organization status. This relationship continues to strengthen both operationally and financially while continuing to gain support in the community.

Some of the accomplishments from this past season include:

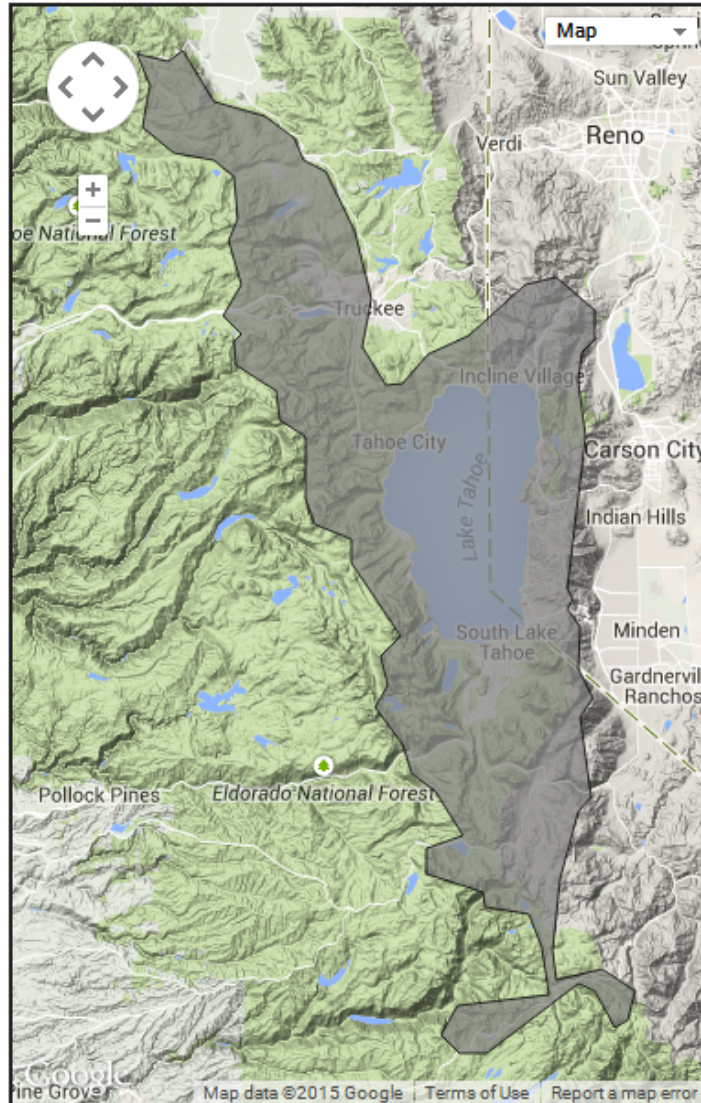
- SAC's nonprofit branch contributed \$71,500 to the Forest Service avalanche forecasting efforts, and additionally funded 56 professional observations to supplement forecaster data.
- The nonprofit generated approximately \$42,000 in income in FY 2018 that will be utilized to support future operating budgets.
- The Tahoe National Forest (TNF) provided \$11,800 in infrastructure support.
- The USDA Forest Service provided \$35,300 for forecaster salaries in the form of \$24,300 from Region 5 and \$11,000 from Region 4.
- The SAC website was accessed over 672,800 times by over 106,861 unique visitors from October 1st through April 22nd.
- SAC issued 142 daily avalanche advisories and 9 early season snow condition reports.
- The TNF forecasters continued to strengthen their working relationship with the National Weather Service in Reno, local ski patrols, and other professional organizations.
- The nonprofit put on the sixth, very successful and well attended, Professional Avalanche Workshop (PAWS), in memory of Bill Foster.
- The nonprofit operated two three-day motorized level 1 avalanche courses thanks to grants from CA OHMVR Division and NV OHV Commission.
- SAC presented over 20 avalanche awareness presentations at venues ranging from local high schools and ski teams to regional outdoor shops and college campuses.
- SAC presented five motorized specific avalanche awareness presentations.
- SAC presented five avalanche awareness sessions covering all the fifth grade classes in Lake Tahoe Unified School district. This was part of the EpicPromise Winter Adventure Program in partnership with South Tahoe Environmental Education Coalition.
- In partnership with the Women of the Squaw Valley Alpine Meadows Ski Patrol, SAC issued over 20 avalanche education scholarships to the public, totaling nearly \$10,000.

We would like to extend our gratitude to everyone who has put forth time and effort to support the Sierra Avalanche Center.

## Advisory Area

The advisory area of the Sierra Avalanche Center covers approximately 1,500 square miles of the Central Sierra Nevada Mountains of California and Nevada. The advisory area is bound by Hwy 49 Yuba Pass on the north and Hwy 4 Ebbetts Pass on the south. The advisory covers the avalanche terrain along the Sierra Crest and extends to the eastern slope of the Sierra Nevada. Two inroads to the west side of the Sierra Crest exist within in the advisory area at Carson Pass and at Ebbetts Pass, in order to include the backcountry terrain surrounding the established boundaries of the Kirkwood and Bear Valley ski areas.

Map of the Sierra Avalanche Center forecast area



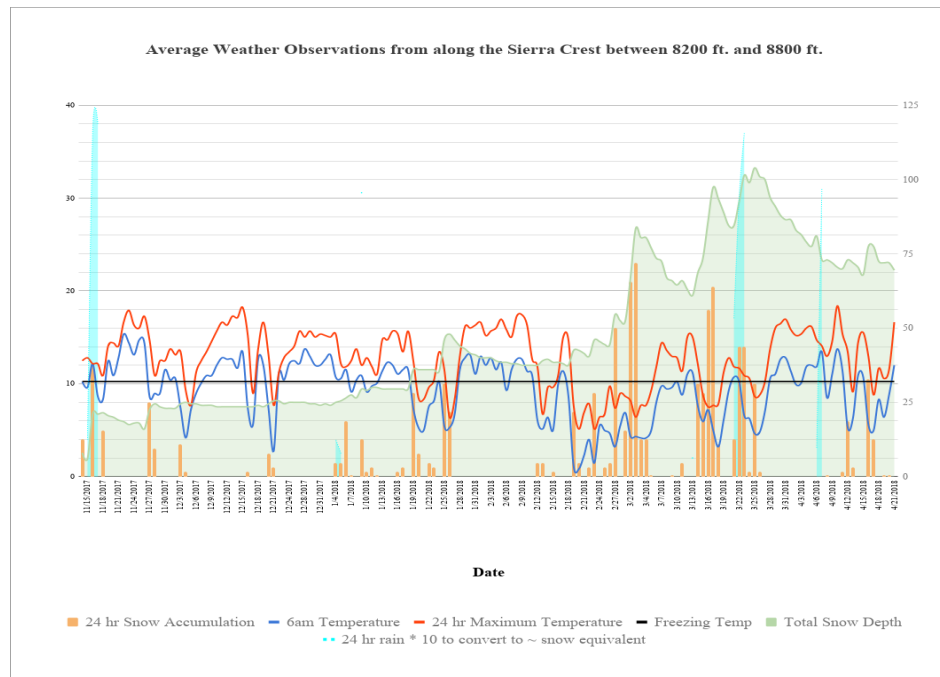
## Forest Service Forecast Team



The Tahoe National Forest employs the avalanche forecasters who work in the Sierra Avalanche Center Program. Brandon Schwartz is lead forecaster and directs the avalanche forecasting program. Andy Anderson works as a senior forecaster under Brandon. Steve Reynaud works as third forecaster in the program under Brandon and Andy.

All three forecasters work 5 days per week collecting daily avalanche, snowpack, and weather observations. This data is combined with additional data received from the SAC Professional Observers, local professional backcountry guide services, local professional ski patrols, and the general public. The Tahoe National Forest forecasters are solely responsible for the creation of the daily avalanche advisories issued through the SAC website as well as any issued avalanche watches and warnings.

## Field Observations



The avalanche center's formal program of avalanche, snowpack, and weather information continued strong following the personnel additions last season. Tahoe National Forest/SAC forecasters Brandon Schwartz, Andy Anderson, and Steve Reynaud returned to their positions. Travis Feist and David Reichel returned as professional field observer for the southern portion of the forecast area. The SAC website continued to allow public and professional users to include video, photos, and maps in their observations.

Professional guide services Alpenglow guides, Alpine Skills International, Donner Summit Avalanche Seminars, Mountain Adventures Seminars, and Tahoe Mountain School shared their field observations with the avalanche center. The Central Sierra Snow Laboratory, Kirkwood, Mt. Rose, Squaw Valley, and Sugar Bowl also submitted observations to the avalanche center. This information, combined with observations submitted by the general public, was an important supplement to the information gathered by USFS forecasters as well as the SAC professional observers.

The number of backcountry snowpack and avalanche observations collected by the TNF/SAC forecasters and pro observers was 263 this past season. These were supplemented by an additional 63 backcountry snowpack and avalanche observations submitted by the local guide services and 125 observations from the general public.

## Sierra Avalanche Center Nonprofit Avalanche Awareness and Education



The nonprofit arm of SAC continued its focus on public outreach and avalanche education during the winter of 2018. SAC presented over 20 avalanche awareness presentations at various venues ranging from local high schools and ski teams to regional outdoor shops and college campuses. The avalanche center also presented five motorized-specific avalanche awareness presentations.

The nonprofit put on the sixth, very successful and well attended, Professional Avalanche Workshop (PAWS), in memory of Bill Foster and operated two three-day motorized level 1 avalanche courses thanks to grants from CA OHMVR Division and NV OHV Commission. In partnership with the Women of the Squaw Valley Alpine Meadows Ski Patrol, SAC issued over 20 avalanche education scholarships to the public, totaling nearly \$10,000.

The avalanche center continues to focus on avalanche awareness presentations that bring lifesaving information and skills to the winter sports community.

## Sierra Avalanche Center Fiscal Year 2018 budget

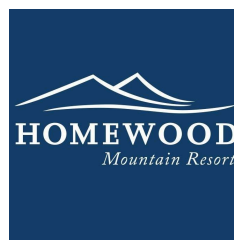
Sierra Avalanche Center had another successful fundraising year, raising support for the avalanche forecasters and observers, and the growing education and avalanche awareness work of the avalanche center.

	FY18
<b>INCOME</b>	
Individual Donations	\$55,608
Corporate Donations	\$51,896
Foundation Donations	\$5,700
Event Income	\$40,206
Grant: CA OHMVR	\$85,844
Grant: NV OHV	\$8,284
Grant: A3 Workshop	\$1,000
Merchandise Sold	\$784
Ski Days	\$57,444
Realized Gains/Losses	\$311
Other Income	\$856
Old Snowmobile Sale	\$3,500
Equipment Refund	\$2,349
<b>TOTAL INCOME</b>	<b>\$313,782</b>
<b>EXPENSES</b>	
Contractor/Staff (Total)	\$171,362
<i>Executive Director</i>	\$60,374
<i>Education Coordinator</i>	\$13,710
<i>USFS Forecasters</i>	\$71,514
<i>Professional Observers</i>	\$14,490
<i>Awareness Presentors</i>	\$4,575
<i>OHV Level 1 Instructors</i>	\$6,699
Advertising/Marketing	\$19,014
Equipment	\$37,364
Education Expenses	\$24,056
Office/General Admin	\$6,304
Professional Fees	\$11,768
Banking Fees	\$1,856
<b>TOTAL EXPENSES</b>	<b>\$271,724</b>
<b>NET (INCOME - EXPENSES)</b>	<b>\$42,058</b>

## Sponsors 2017-18 Season

SAC values all of our industry partners and sends a heartfelt “Thank You” to all of the organizations that have helped support the free daily forecast, and the growth and development of the Center over the past 10 years.

### Summit: Sponsors who donated more than \$10,000





**Extreme: Sponsors who donated \$5000-\$9,999**

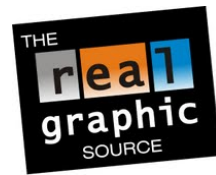


**High: Sponsors who donated \$2500-\$4999**





**Considerable - Sponsors who donated \$1000-\$2499**



FLIGHT DECK  
sports bar • grill  
SOUTH LAKE TAHOE



AMERICAN  
AVALANCHE  
ASSOCIATION

**Moderate - Sponsors who donated \$500-\$999**

